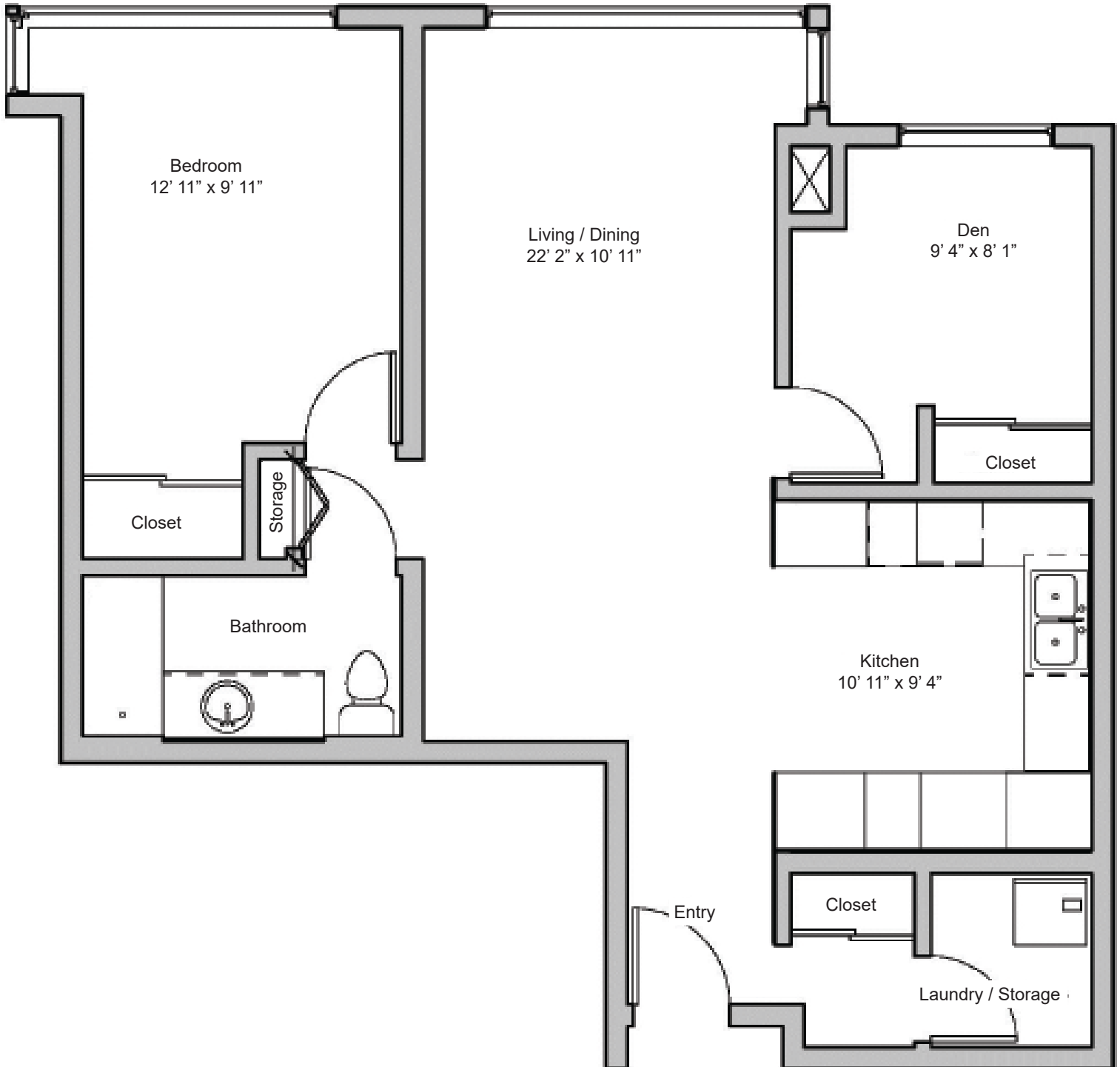


TWO NEPTUNE DRIVE

A Baycrest Residential Property

Suite 5: Layout and Features

- 1 bedroom + den
- 865 sq.ft.
- 1 bathroom
- Exposure: North



Laurie Banks

Resident Relations & Site Manager

Email: LBanks@Baycrest.org

Phone: 416-785-2500 ext. 2270

Elaine Ross

Marketing & Sales Coordinator

Email: ERoss@Baycrest.org

Phone: 416-785-2500 ext. 3414

Reuben Cipin
Healthy Living Community

Baycrest

2 Neptune Drive | North York | ON | M6A 3E6