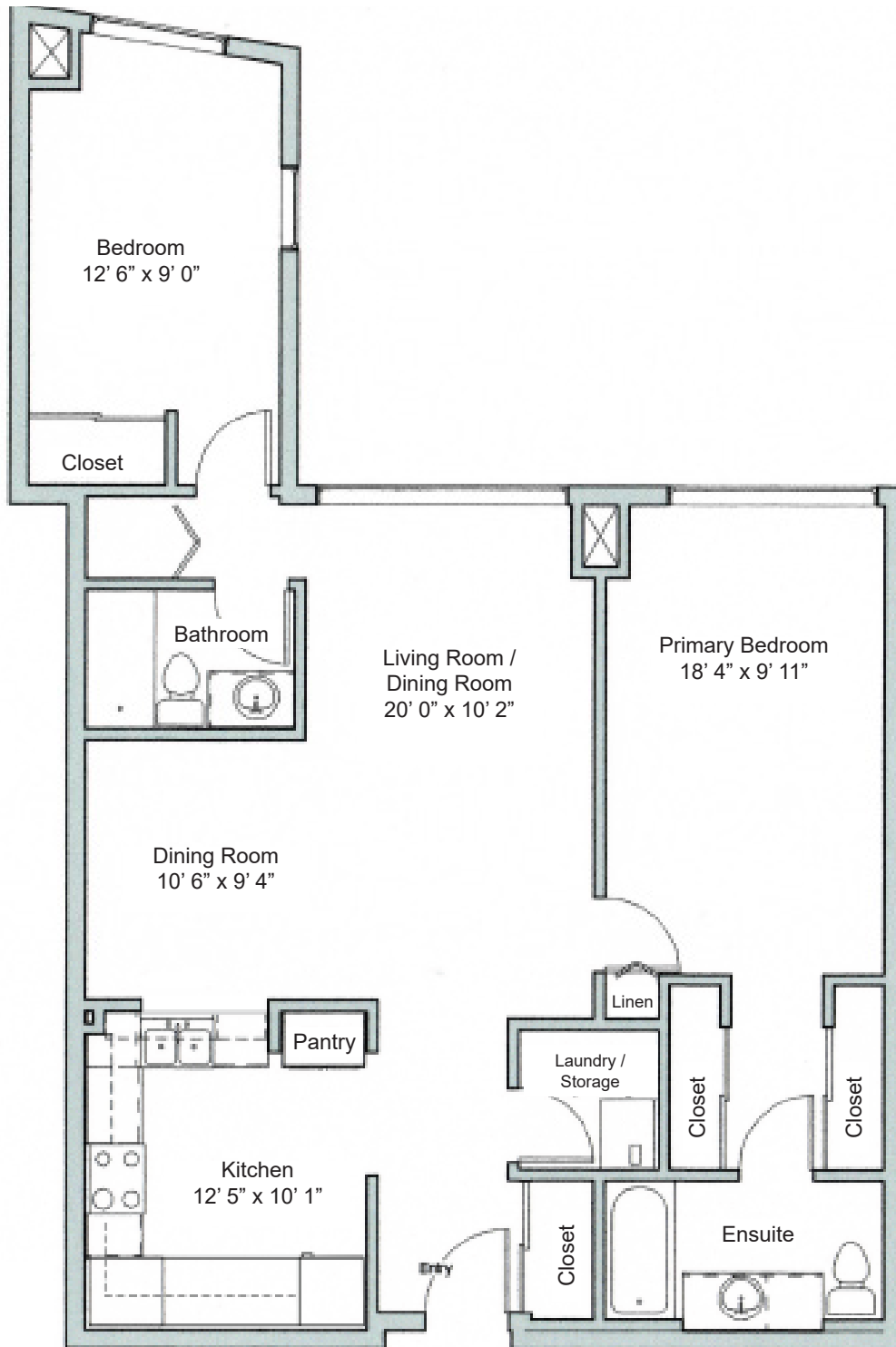


TWO NEPTUNE DRIVE

A Baycrest Residential Property

Suite 11: Layout and Features

- 2 bedroom
- 2 bathroom
- 1,108 sq.ft.
- Exposure: East



Laurie Banks

Resident Relations & Site Manager

Email: LBanks@Baycrest.org

Phone: 416-785-2500 ext. 2270

Elaine Ross

Marketing & Sales Coordinator

Email: ERoss@Baycrest.org

Phone: 416-785-2500 ext. 3414

Reuben Cipin
Healthy Living Community

Baycrest

2 Neptune Drive | North York | ON | M6A 3E6