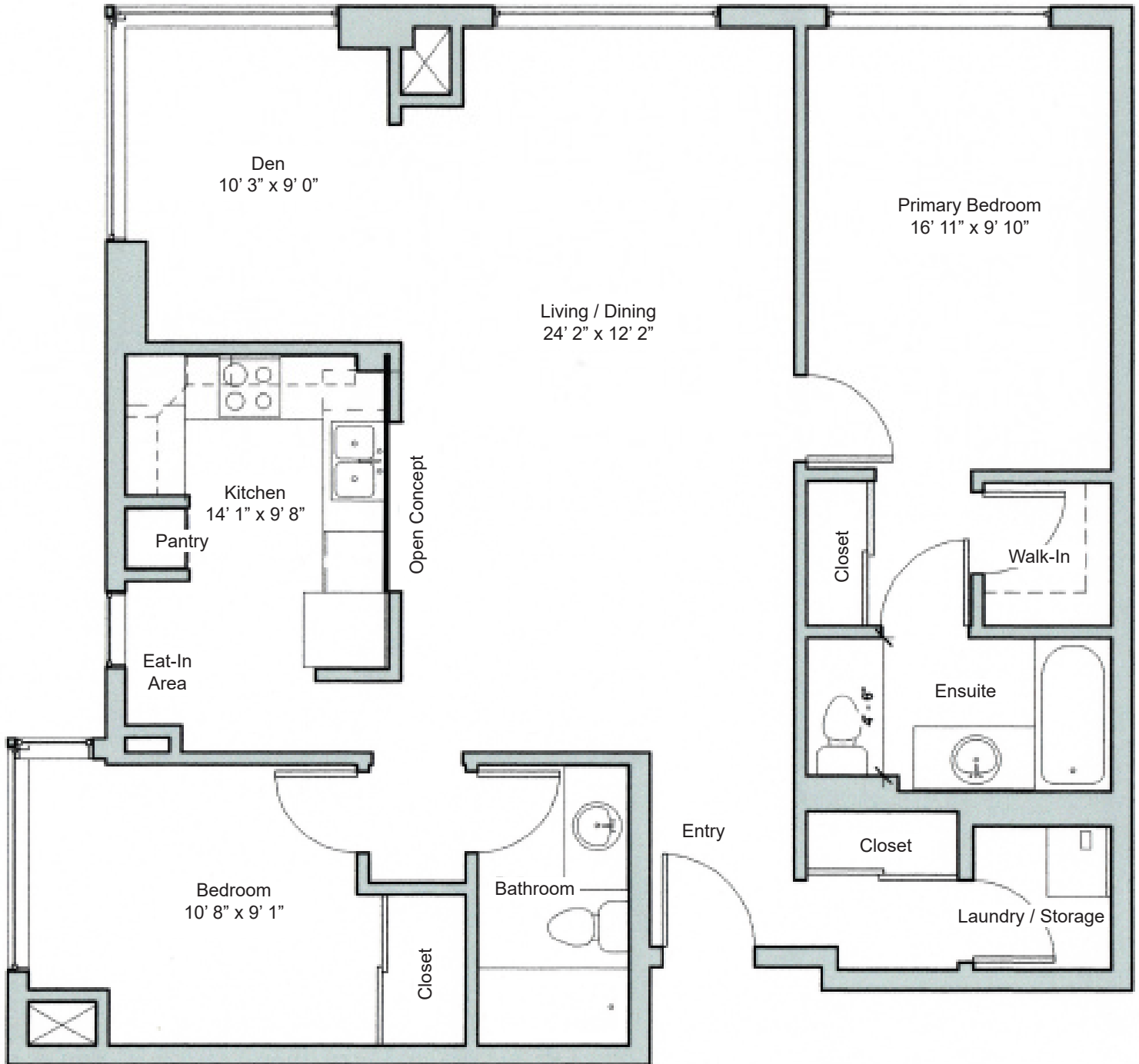


# TWO NEPTUNE DRIVE

A Baycrest Residential Property

## Suite 14: Layout and Features

- 2 bedroom + den
- 2 bathroom
- 1,211 sq.ft.
- Exposure: South-West



### Laurie Banks

Resident Relations & Site Manager

Email: [LBanks@Baycrest.org](mailto:LBanks@Baycrest.org)

Phone: 416-785-2500 ext. 2270

### Elaine Ross

Marketing & Sales Coordinator

Email: [ERoss@Baycrest.org](mailto:ERoss@Baycrest.org)

Phone: 416-785-2500 ext. 3414

Reuben Cipin  
Healthy Living Community

**Baycrest**

2 Neptune Drive | North York | ON | M6A 3E6